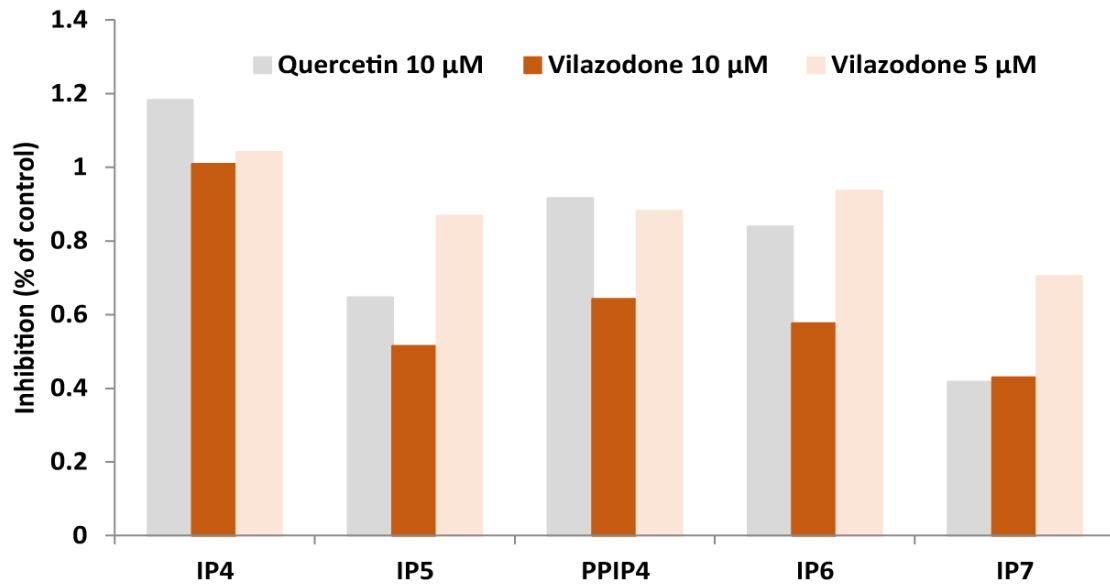
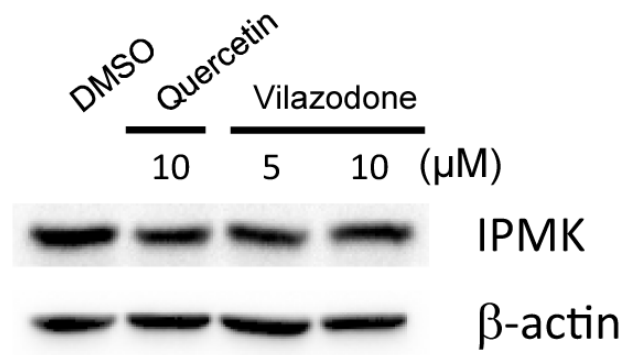


Supplementary Fig. S1. The pharmacophore model and its geometric parameters. The 3D spatial arrangement and the distance constraints of generated pharmacophore model is shown.



Supplementary Fig. S2. The effects of vilazodone upon the InsP profile in NIH3T3-L1 fibroblasts. The relative levels of inositol phosphates in [Figure 3B](#). The inhibition percentiles presented at the y-axis are relative to the DMSO control of each inositol phosphate species.



Supplementary Fig. S3. Immunoblotting of IPMK protein.
Expression level of IPMK protein in NIH3T3-L1 fibroblasts treated with DMSO, quercetin or vilazodone.