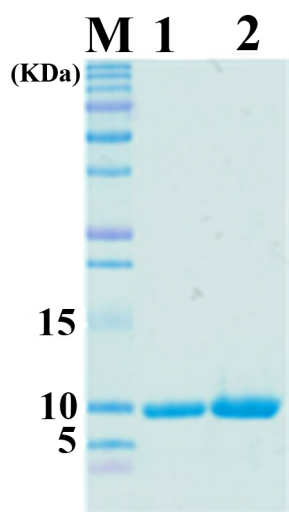
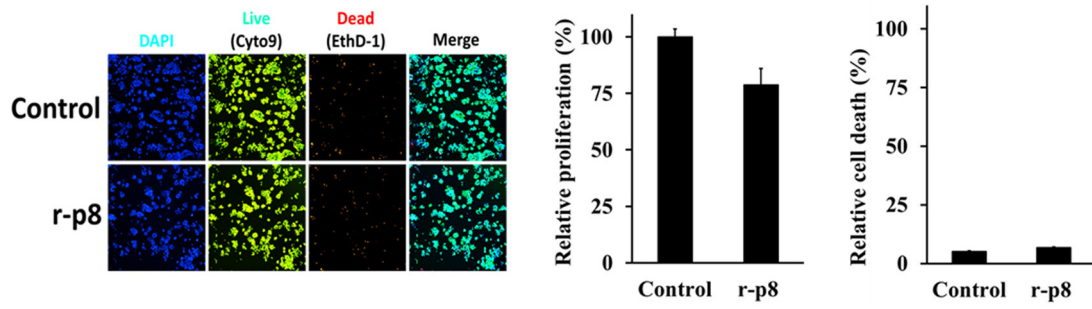


Supplementary Fig. S1. Identification of *L. rhamnosus*-derived p8 using MALDI-TOF mass spectrometry.



Supplementary Fig. S2. Recombinant p8 was separated on a SDS-PAGE gradient gel. Bands representing p8 were visualized by staining with Coomassie Brilliant Blue G-250. M, size markers; lane 1, 2 μg of r-p8; lane 2, 5 μg of r-p8.



Supplementary Fig. S3. Effect of r-p8 on cell death in DLD-1 cells. R-p8 (40 μ M) was incubated with DLD-1 cells (3×10^3 cells/well) for 72 h, and both cells (control and r-p8 [40 μ M] treatment) were then stained with the Live/Dead cell markers Syto9 (Green)/EthD-1 (Red) or with the total cell marker Hoechst (Blue).