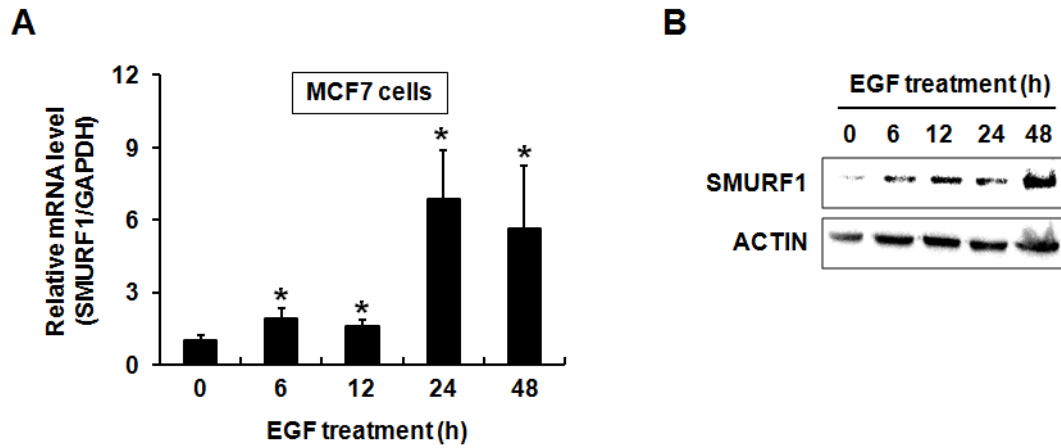
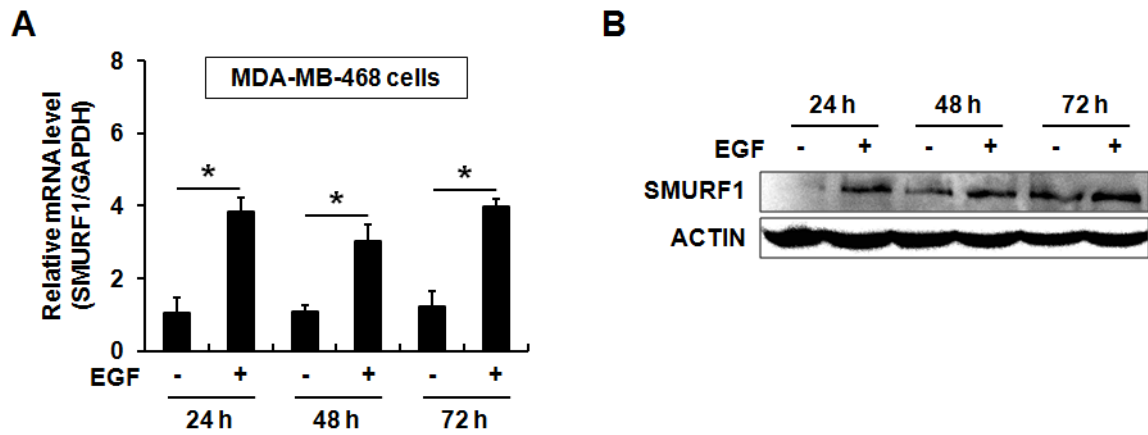


# Supplemental Data



**Supplemental Fig. 1. EGF induces SMURF1 expression in MCF7 breast cancer cells.** Serum-starved MCF7 cells were incubated in the presence of EGF (10 ng/ml) for the indicated periods and the expression levels of SMURF1 were evaluated by real-time PCR (A) and Western blot analysis (B). Data are presented as the means  $\pm$  SD. \*  $p < 0.05$  compared to the 0 h time point.



**Supplemental Fig. 2. EGF induces SMURF1 expression in MDA-MB-468 breast cancer cells.** Serum-starved MDA-MB-468 cells were incubated in the presence or absence of EGF (20 ng/ml) for the indicated periods and the expression levels of SMURF1 were evaluated by real-time PCR (A) and Western blot analysis (B). Data are presented as the means  $\pm$  SD (\*  $p < 0.05$ ).