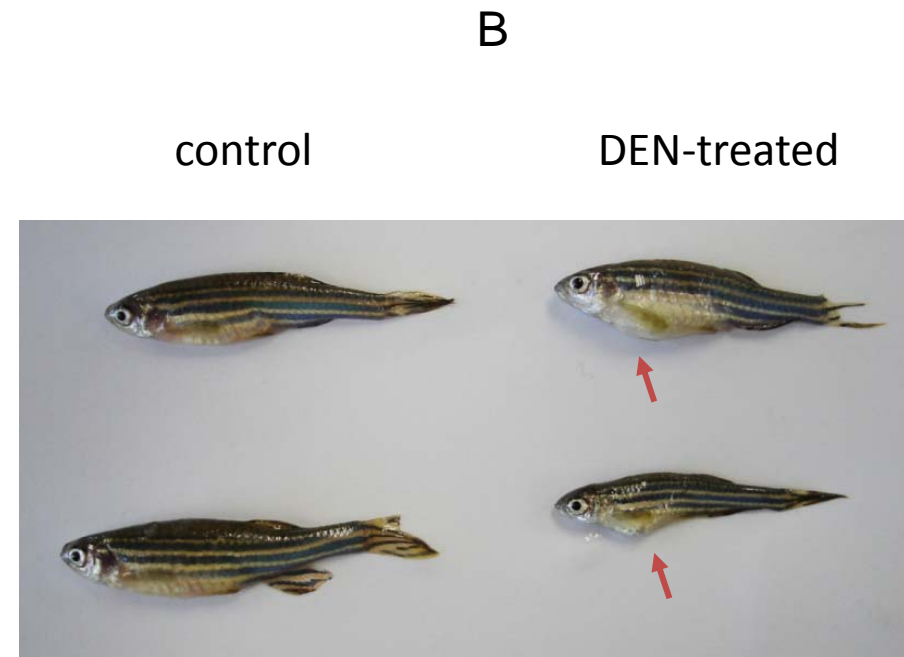
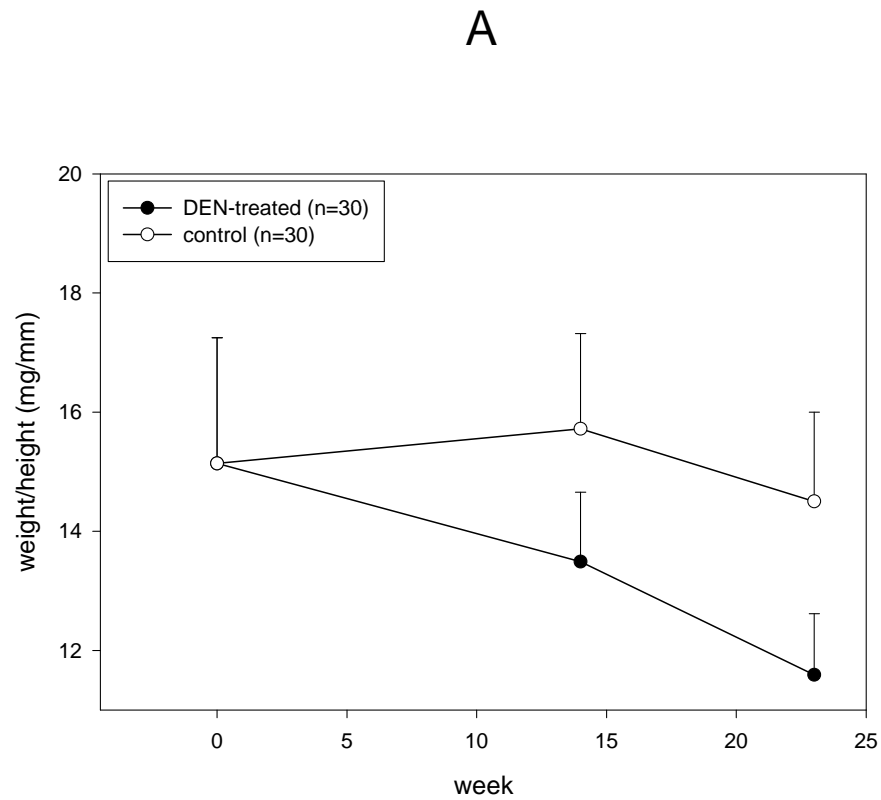


Suppl. Fig. 1



Suppl Fig. 1. Change of body weight/height ratio during DEN-treatment (A) and photo of representative fish (B). The grossly appeared tumor was indicated by arrow.

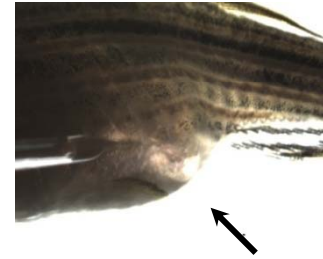
Suppl. Fig. 2

V156K-PL-Ad

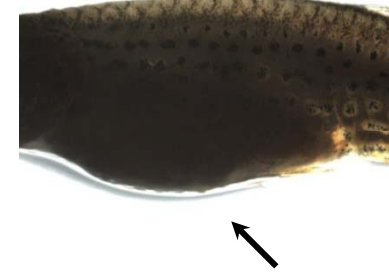
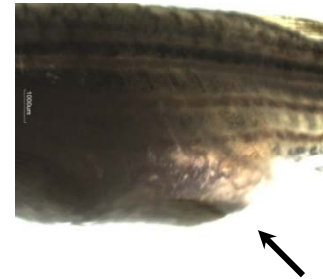
WT-PL-Ad

Ad alone

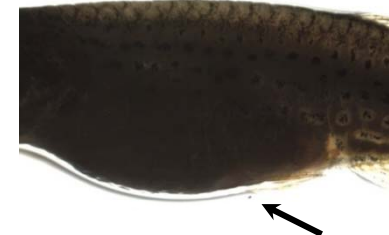
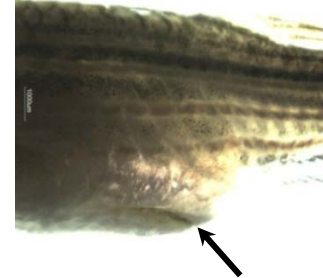
0 hr



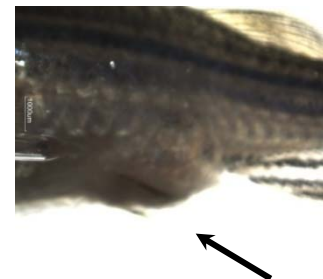
24hr



48hr



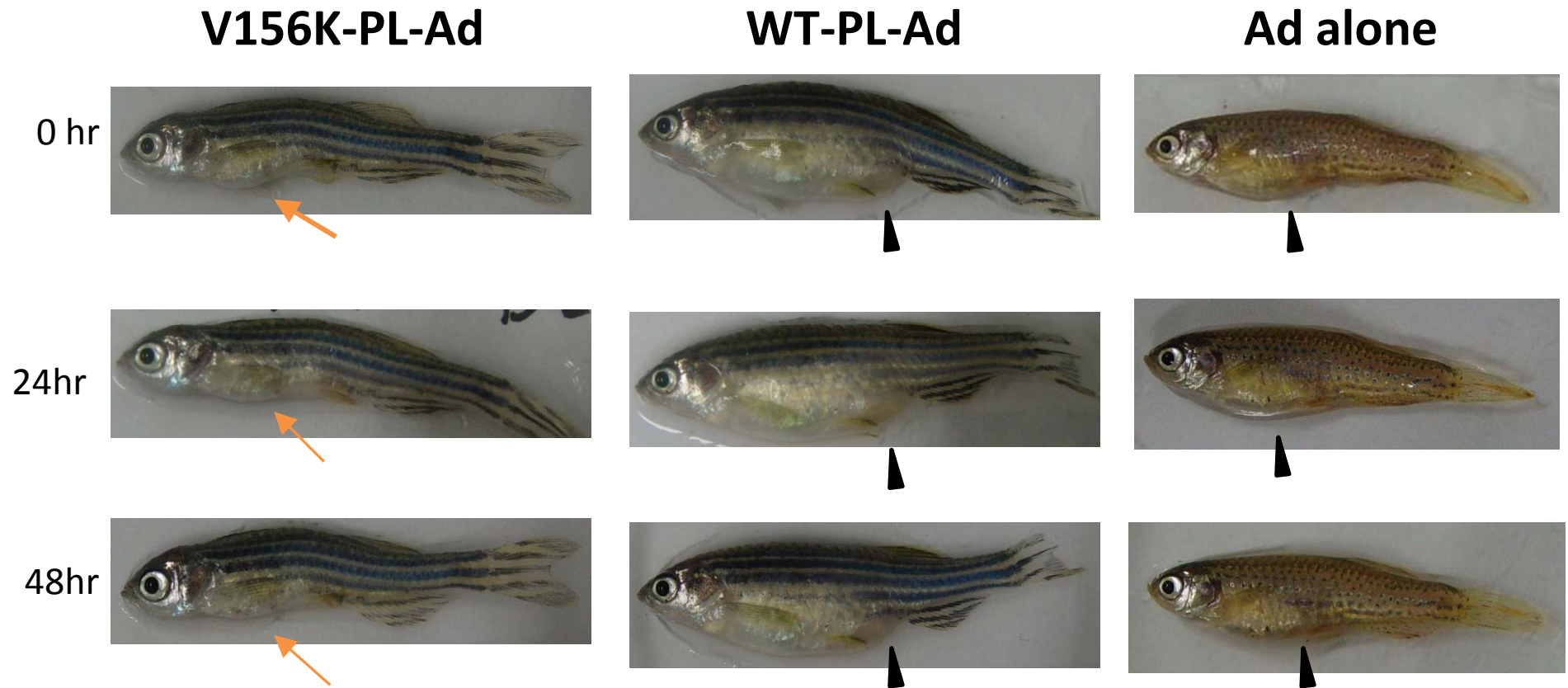
72 hr



Suppl. Fig. 2. Tumor-removal effect by PL-Ad or Ad alone injection.

The longest body width was measured under stereoscopic observation (x40 magnification).

Suppl Fig. 3



Suppl. Fig. 3. Representative photo of zebrafish after Ad injection at the indicated time. The tumor volume was clearly reduced by V156K-PL-Ad injection, as indicated by the arrow, while WT-PL-Ad or Ad alone-injected zebrafish did not exhibit adequate tumor removal activity, as indicated by the arrowhead.